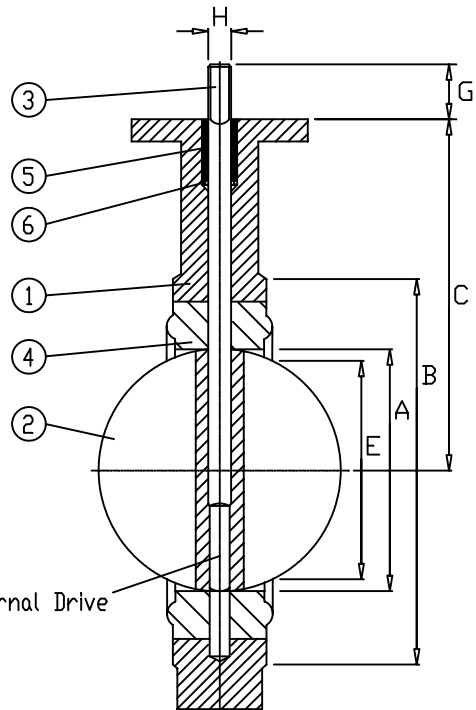
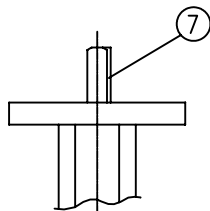
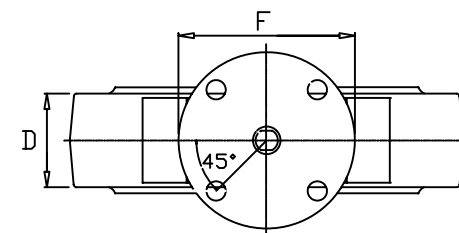
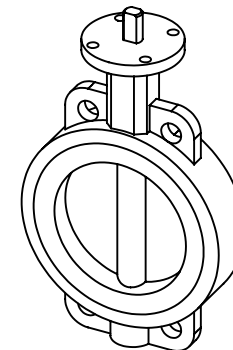


FLOW VIEW



SECTION



TOP VIEW

NOTES:

The figure 396 can not be used on a pipe or flange with an inside diameter less than the 'E' dimension.

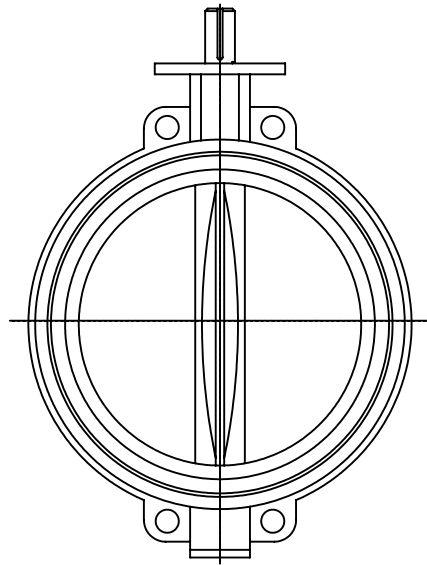
API Standard 609

VALVE DIMENSIONS

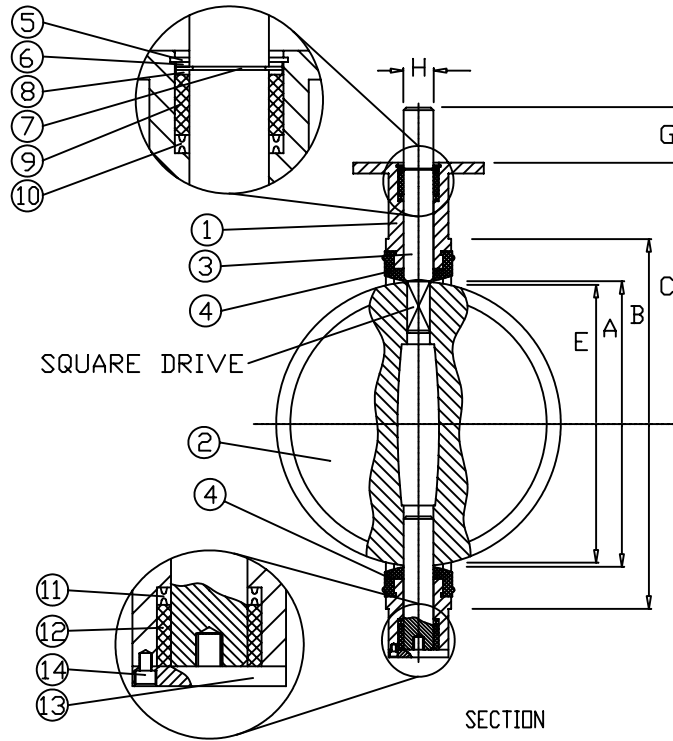
Size	A	B	C	D	E	F	G	H	K	Keyway	Weight	Top Plate Drilling		
												Bolt Circle	No. of Holes	Hole Dia.
2"	2	3 1/2	5 1/2	1 5/8	1 3/8	4	1 1/4	9/16	3/8	-	7	3 1/4	4	7/16
2.5"	2 1/2	4 1/4	6	1 3/4	2 1/16	4	1 1/4	9/16	3/8	-	9	3 1/4	4	7/16
3"	3	4 3/4	6 1/4	1 3/4	2 9/16	4	1 1/4	9/16	3/8	-	10	3 1/4	4	7/16
4"	4	5 7/8	7	2	3 5/8	4	1 1/4	5/8	7/16	-	13	3 1/4	4	7/16
5"	5	7 1/8	7 1/2	2 1/8	4 3/4	4	1 1/4	3/4	1/2	-	18	3 1/4	4	7/16
6"	5 3/4	8 3/16	8	2 1/8	5 1/2	4	1 1/4	3/4	1/2	-	20	3 1/4	4	7/16
8"	7 3/4	10 1/4	9 1/2	2 1/2	7 1/2	6	1 1/4	7/8	5/8	-	35	5	4	9/16
10"	9 3/4	12 9/16	10 3/4	2 1/2	9 19/32	6	2	1 1/8		1/4x1/8	46	5	4	9/16
12"	11 3/4	14 3/4	12 1/4	3	11 9/16	6	2	1 1/8		1/4x1/8	70	5	4	9/16

Item No.	Name	No. Req'd	Material	Remarks	SUBASSEMBLY PART NUMBER					
					Trim	Part	Size	Figure No.	Style	
1	Wafer Body	1								
2	Disc	1								
3	Stem	1								
4	Seat	1								
5	Bushing	1								
6	Seal	1								
7	Key	1								
					<p align="center">ABZ MANUFACTURING, Inc. 2"-12" Figure 396 Valve Standard Wafer Pattern</p> <p>BODY: Wafer w/360° Top Plate DISC: Standard STEM: One Piece w/Flats/Keyway SEAT: Elastomer</p>					
					BY	DATE	DESCRIPTION			
					REVISIONS	DATE:	07-02-04	DRAWING NO. 396		

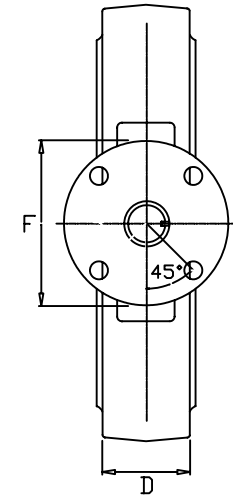




FLOW VIEW



SECTION



TOP VIEW

VALVE DIMENSIONS

Size	A	B	C	D	E	F	G	H	Keyway	Weight	Top Plate Drilling		
											Bolt Circle	No. of Holes	Hole Dia.
14"	13 1/4	17 9/16	12	3	13 1/8	6	2 1/4	1 3/8	5/16x5/16	93	5	4	9/16
16"	15 1/4	20 1/8	12 61/64	4	15	6	2 1/4	1 5/8	3/8x3/8	154	5	4	9/16
18"	17 1/4	21 1/2	14 1/2	4 1/4	16 7/8	8	3	1 7/8	1/2x1/2	204	6 1/2	4	13/16
20"	19 1/4	23 3/4	15 7/8	5	18 3/4	8	3	2 1/8	1/2x1/2	274	6 1/2	4	13/16
24"	24 1/2	27 3/4	22 1/4	6	22 5/8	8	3	2 1/8	1/2x1/2	274	6 1/2	4	13/16

NOTES:

The figure 396 cannot be used on a pipe or flange with an inside diameter less than the "E" dimension.

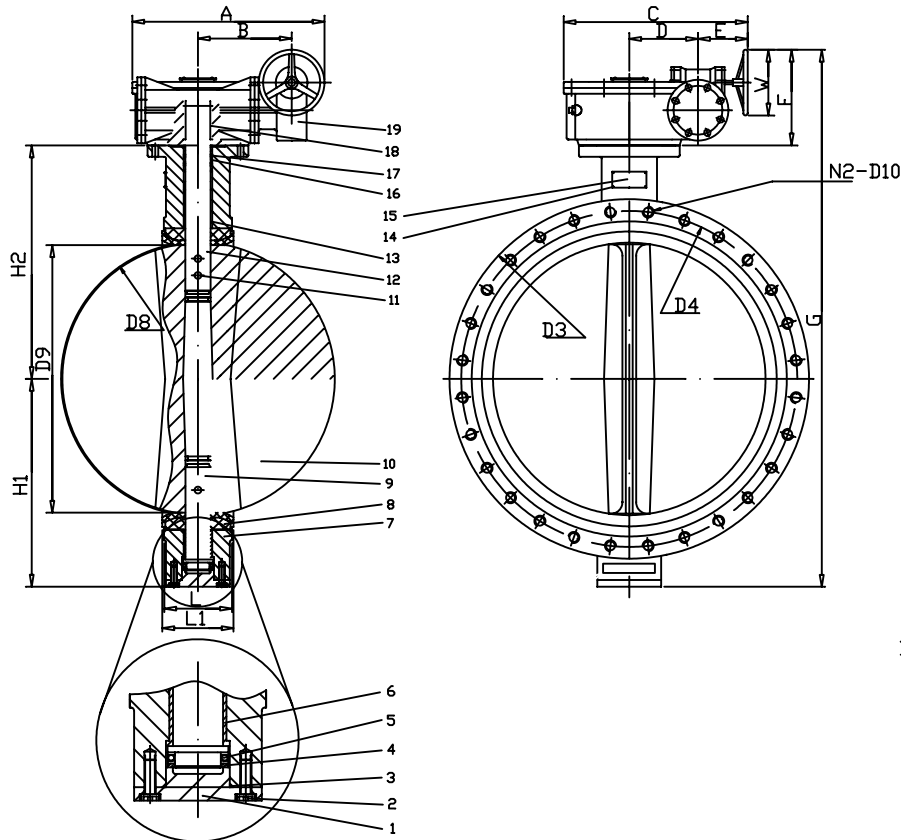
Item No.	Name	No. Req'd	Material	Remarks	SUBASSEMBLY PART NUMBER						
					Trim	Part	Size	Figure No.	Style		
1	WAFER BODY	1									
2	DISC	1									
3	STEM	1									
4	SEAT	1									
5	CLIP	1									
6	WASHER	1									
7	CLIP	1									
8	WASHER	1									
9	BUSHING	1									
10	V-PACKING, UPPER	1									
11	V-PACKING, LOWER	1									
12	BUSHING	1									
13	CAP PLATE	1									
14	CAP BOLT	1									
					API Standard 609						
					BY	DATE	DESCRIPTION				
					REVISIONS	DATE:	04-04-05			DRAWING NO.	396-14-24

ABZ MANUFACTURING, Inc.

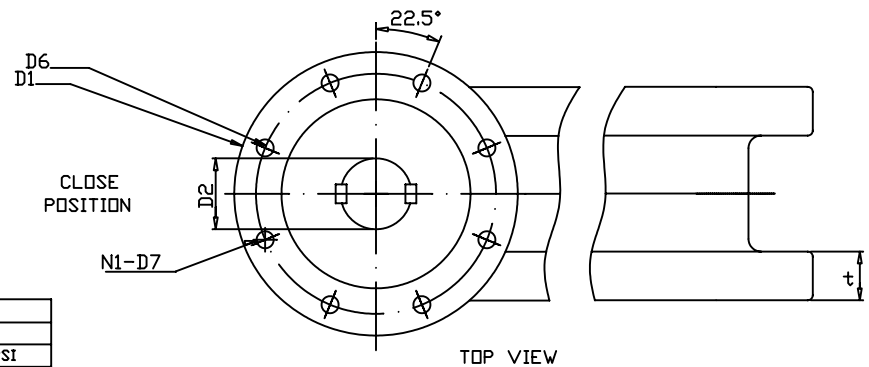
14"-24" Figure 396 Valve
Standard Wafer Pattern



BODY: Wafer w/360° Top Plate
DISC: Standard
STEM: One Piece w/ Flats or Keyway
SEAT: Elastomer




ITEM	QTY	DESCRIPTION	MATERIAL
19	1	GEAR BOX	
18	2	KEY	
17	3	'O' RING	
16	4	SHORT BUSHING	
15	1	NAME PLATE	
14	4	PLATE RIVETS	
13	1	LONG BUSHING	
12	1	UPPER SHAFT	
11	3	TAPER PIN	
10	1	DISC	
9	1	LOWER SHAFT	
8	1	SEAT	
7	1	BODY	
6	1	LOWEER BUSHING	
5	1	BEARING	
4	1	GASKET	
3	1	'O' RING	
2	4	SCREW	
1	1	END COVER	



- TECHNICAL REQUIREMENT**
1. THE FACE TO FACE OF BODY COMPLY WITH MSS SP-67-90 AND AP1609 AND ISO5752
 2. TOP CONNECTION: ISO5211, ROUND STEM WITH KEY
 3. DIMENSIONS FOR MOUNTING FLANGE FOR DN750(30"), DN900(36"), DN1050(42"), DN1200(48") ARE ACCORDANCE WITH ANSIB16.1 125, FOR OTHERS CONFORM DIN2501/ISO2084 PN10.

TECHNICAL DATA	
NOMINAL PRESSURE	150 PSI
TEST PRESSURE	SEAT 165 PSI
	SHELL 225 PSI
WORKING TEMP. (Deg. C)	EPDM -35 TO 110
	NBR -12 TO 82

SIZE	D1	D2	D3	D4	N2	D10	D6	N1	D7	D8	D9	L	L1	H1	H2	t	A	B	C	D	E	F	G	W	KEY	WEIGHT	ABZ MANUFACTURING, INC.		
28"	300	63.35	910	840	24	M33	254	8	18	695	675.62	163	169	520.2	624	54	590	230	470	140	170	360	1504.2	400	18X63	500kgs	28"-48" Figure 396/397 Valve Standard Flanged Pattern 		
30"	300	63.35	984	914.4	28	1 1/4-7UNC	254	8	18	744	725.5	167	173	560	660	54	590	230	470	140	170	360	1588	400	18X63	517kgs			
32"	300	63.35	1015	950	24	M36	254	8	18	794.7	772.14	188	195	591.2	672	61	590	230	470	140	170	360	1623	400	18X63	601kgs			
36"	300	75	1168	1050	32	1 1/2-6UNC	254	8	18	864.7	840.5	203	211	656	720	61	634	247	550	162	200	387	1763	400	20X100	795kgs			
40"	300	85	1230	1085.8	28	M39	254	8	18	965	940.52	216	224	721	800	64	634	247	550	162	200	387	1908	400	20X100	864kgs			
42"	300	95	1346	1257	36	1 1/2-6UNC	254	8	18	1030	999	251	261	777.2	858	67	810	320	650	236	200	473	2102	450	25X140	1128kgs	BODY: Flanged w/360° Top Plate DISC: Standard STEM: Two Piece w/Keyway SEAT: Elastomer		
48"	350	105	1511	1423	44	1 1/2-6UNC	298	8	22	1160	1126.6	276	286	864	941	70	810	320	650	236	200	473	2272	450	28X140	1512kgs	DATE: 10-24-05	REV. 1	DRAWING NO. 396-397-28-48