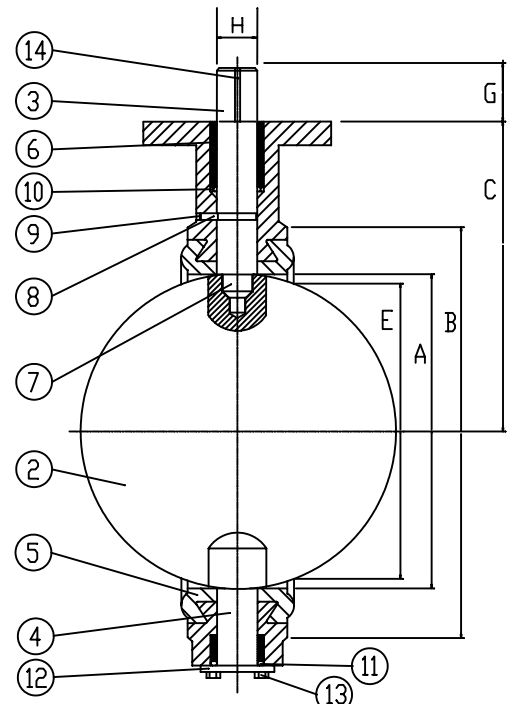
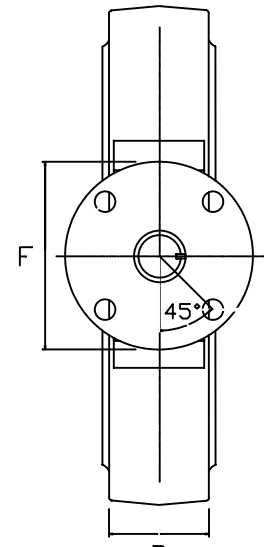


FLOW VIEW



SECTION



TOP VIEW

NOTES:
The figure 201 can not be used on a pipe or flange with an inside diameter less than the "E" dimension.

VALVE DIMENSIONS													
Size	A	B	C	D	E	F	G	H	Keyway	Weight	Top Plate Drilling		
											Bolt Circle	No. of Holes	Hole Dia.
14"	13 1/4	17 9/16	12	3	13 1/8	6	2 1/4	1 3/8	5/16x5/16	93	5	4	9/16
16"	15 1/4	20 1/8	12 61/64	4	15	6	2 1/4	1 5/8	3/8x3/8	154	5	4	9/16
18"	17 1/4	21 1/2	14 1/2	4 1/4	16 7/8	8	3	1 7/8	1/2x1/2	204	6 1/2	4	13/16
20"	19 1/4	23 3/4	15 7/8	5	18 3/4	8	3	2 1/8	1/2x1/2	274	6 1/2	4	13/16

Item No.	Name	No, Req'd	Material	Remarks
1	Wafer Body	1		
2	Disc	1		
3	Stem, Upper	1		
4	Stem, Lower	1		
5	Seat	1		
6	Bushing	2		
7	Square Drive Shaft	1		
8	Stem Retainer	1		
9	Item 8, O-Ring	1		
10	Item 3 Seal	1		
11	Item 4, O-Ring	1		
12	Cap Plate	1		
13	Cap Bolt	2		
14	Key	1		

SUBASSEMBLY PART NUMBER				
Trim	Part	Size	Figure No.	Style
ABZ MANUFACTURING, Inc. 14"-20" Figure 201 Valve Standard Wafer Pattern				
BODY: Wafer w/360° Top Plate DISC: Standard STEM: Two Piece w/Keyway SEAT: Elastomer				
BY	DATE	DESCRIPTION	DATE:	DRAWING NO.
		REVISIONS	07-02-04	ED 201